

Supplementary Materials to:

Beyond self-serving bias: diffusion of responsibility reduces sense of agency and outcome monitoring.

Frederike Beyer*, Nura Sidarus*, Sofia Bonicalzi, Patrick Haggard

Contents

Supplementary Materials.....	1
1. Stopping Position	2
Table S1.....	2
2. Outcome	2
Table S2.....	2
3. Agency ratings model.....	2
Figure S1.	2
Table S3.....	3
4. FRN model.....	3
Table S4.....	3

Note – The variable “Condition” is used to refer to social context for brevity.

1. Stopping Position

Table S1. Stopping position model: parameter estimates, with bootstrapped 95% confidence intervals. * Based on Satterthwaite degrees of freedom estimation.

	Estimate	S.E.	t	df*	p*	C.I.	
						2.5 %	97.5 %
(Intercept)	80.63	0.97	82.91	27	< 0.001	78.84	82.45
Condition	3.18	0.54	5.85	833.30	< 0.001	2.12	4.26

2. Outcome

Table S2. Outcome (number of points lost) model: parameter estimates, with bootstrapped 95% confidence intervals. * Based on Satterthwaite degrees of freedom estimation.

	Estimate	S.E.	t	df*	p*	C.I.	
						2.5 %	97.5 %
(Intercept)	-12.90	0.53	-24.44	26.89	< 0.001	-13.96	-11.91
Condition	0.094	0.31	0.30	31.98	0.77	-0.51	0.78
Stop Position	6.12	0.27	22.54	31.88	< 0.001	5.63	6.62
Condition x Stop Pos	-0.43	0.29	-1.45	69.96	0.15	-1.00	0.14

3. Agency ratings model

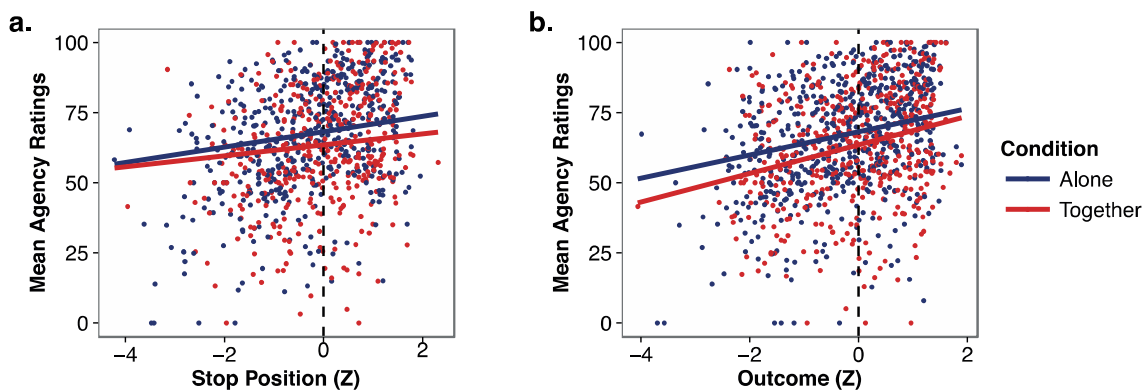


Figure S1. Model predictions (lines) and mean agency ratings (dots) for the two experimental conditions as a function of **a.** stop position (Z-score), and **b.** outcome (Z-score). Note that more positive outcome (Z) values reflect smaller losses, and more negative values reflect larger losses.

Table S3. Agency ratings model: parameter estimates, with bootstrapped 95% confidence intervals. * Based on Satterthwaite degrees of freedom estimation.

	Estimate	S.E.	<i>t</i>	df*	<i>p</i> *	C.I.	
						2.5 %	97.5 %
(Intercept)	68.19	2.86	23.81	26.08	< 0.001	62.59	73.54
Condition	-4.74	1.33	-3.57	22.66	0.002	-7.26	-2.29
Outcome	4.14	0.89	4.63	24.52	< 0.001	2.21	5.61
Stop Position	2.73	0.90	3.03	22.66	0.006	0.77	4.65
Condition x Outcome	0.95	1.14	0.83	23.39	0.41	-1.31	3.49
Condition x Stop Pos	-0.79	1.29	-0.61	26.47	0.55	-3.59	1.64
Outcome x Stop Pos	-0.26	0.54	-0.50	32.85	0.62	-1.33	0.73
Condition x Outcome x Stop Pos	0.47	0.85	0.55	20.08	0.59	-1.16	2.16

4. FRN model

Table S4. FRN model: parameter estimates, with bootstrapped 95% confidence intervals. * Based on Satterthwaite degrees of freedom estimation.

	Estimate	S.E.	<i>t</i>	df*	<i>p</i> *	C.I.	
						2.5 %	97.5 %
(Intercept)	1.78	0.85	2.07	25.83	0.049	-0.025	3.45
Condition	1.26	0.52	2.40	188.52	0.017	0.042	2.28
Outcome	0.18	0.49	0.37	50.58	0.71	-0.83	1.23
Stop Position	-0.53	0.53	-1.00	28.02	0.32	-1.56	0.53
Condition x Outcome	0.83	0.76	1.09	36.55	0.28	-0.59	2.35
Condition x Stop Pos	0.23	0.71	0.33	39.18	0.74	-1.04	1.47
Outcome x Stop Pos	-0.15	0.27	-0.55	57.78	0.58	-0.72	0.41
Condition x Outcome x Stop Pos	0.76	0.60	1.27	19.32	0.22	-0.55	1.95